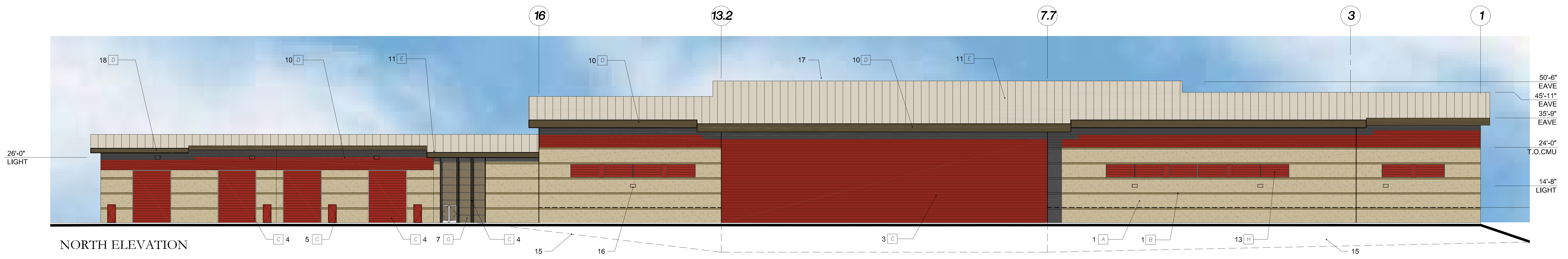
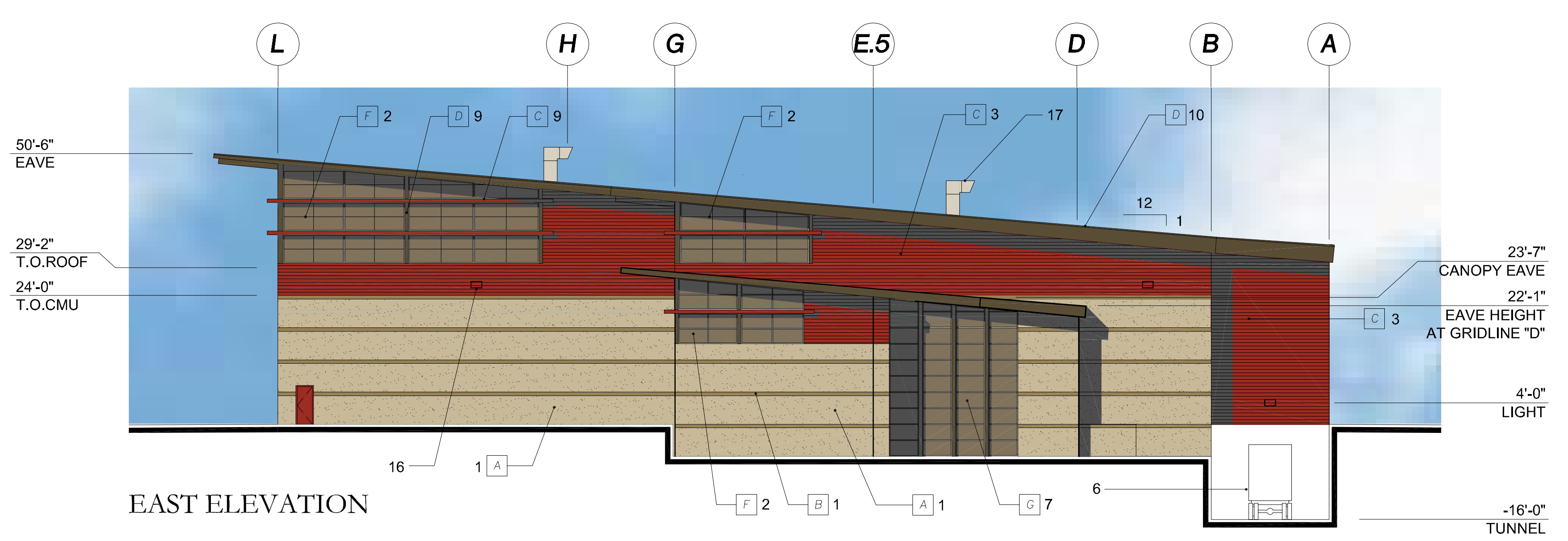


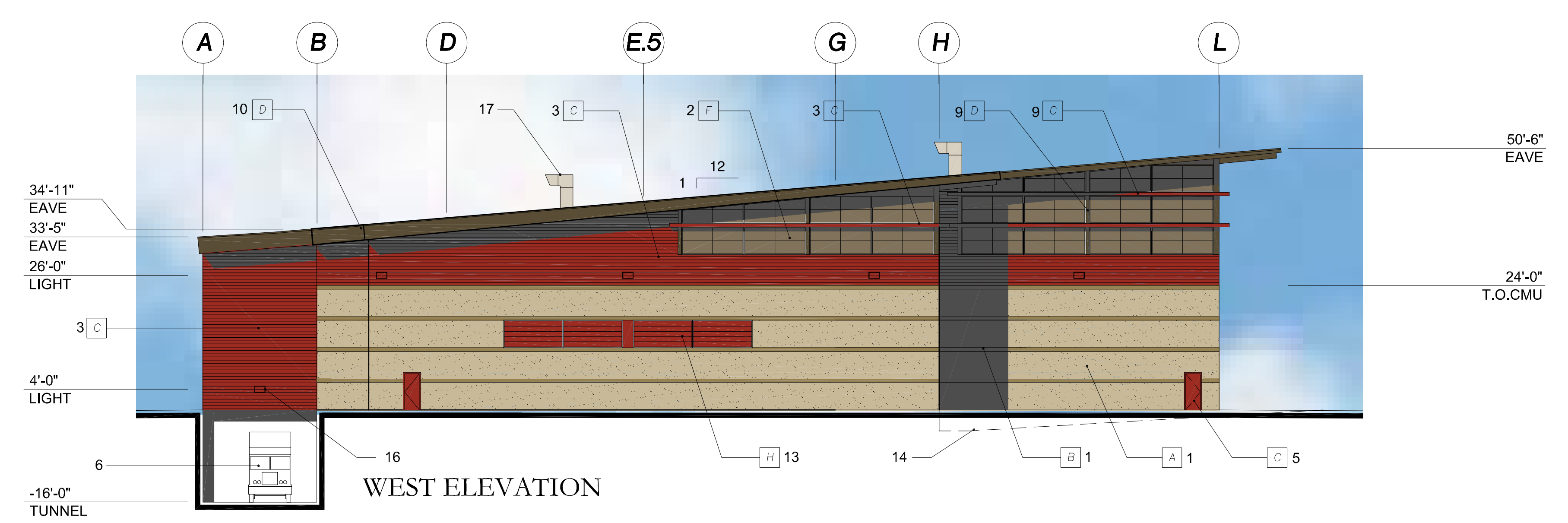
SOUTH ELEVATION



NORTH ELEVATION



EAST ELEVATION



WEST ELEVATION

KEYNOTES

- | | | |
|-----------------------------|-----------------------------------|--|
| 1. CONCRETE BLOCK WALL | 9. STEEL FRAME | 17. EXHAUST STACK PER BUILDING SECTION |
| 2. TRANSLUCENT WALL PANEL | 10. RAKE FLASHING | 18. HHW CANOPY |
| 3. METAL WALL PANEL | 11. METAL ROOF PANEL | |
| 4. METAL ROLL-UP DOOR | 12. METAL ACCENT REVEAL | |
| 5. METAL MANDOOR | 13. LOUVER PANEL | |
| 6. LOAD-OUT TUNNEL | 14. LOADING DOCK | |
| 7. STOREFRONT WINDOW SYSTEM | 15. LOADING RAMP | |
| 8. METAL CANOPY | 16. WALL PACK LIGHT PER SITE PLAN | |

FINISH KEYNOTES

- | | |
|--|--|
| A BUILDING CMU FIELD COLOR: ORCO BLOCK, "WHEAT" PRECISION BLOCK | E METAL ROOF PANEL COLOR: PPG DURANAR "SANDSTONE" |
| B BUILDING CMU ACCENT COLOR: ORCO BLOCK, "SOUR DOUGH" SPLIT-FACE BLOCK | F TRANSLUCENT PANEL COLOR: PENTAGLASS "BRONZE" |
| C METAL WALL PANEL COLOR: PPG DURANAR "COLONIAL RED" | G GLAZING COLOR: PPG "SOLARCOOL" GRAY |
| D METAL ACCENT PANEL COLOR: PPG DURANAR "WEATHERED COPPER" | H LOUVER PANEL COLOR: PPG DURANAR "WEATHERED COPPER" |

SCALE: 1/16"=1'-0"
0' 5' 10' 20' 40'



EDCO RECYCLING & TRANSFER

2755 CALIFORNIA AVENUE
SIGNAL HILL, CALIFORNIA 90755